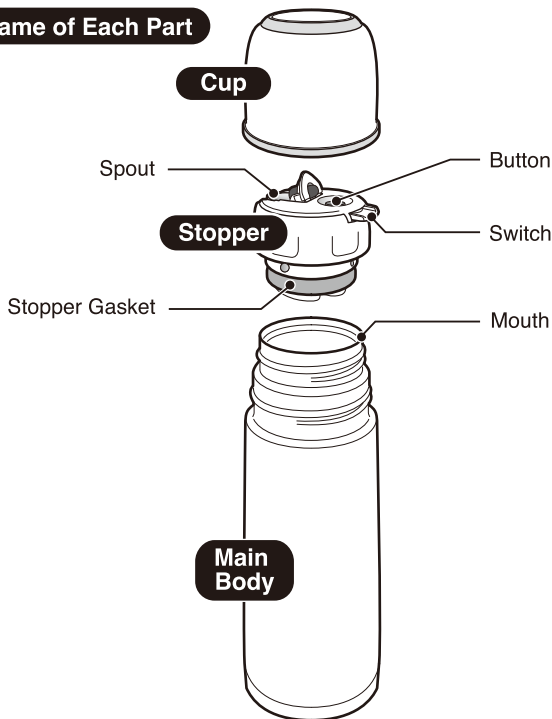


**STAINLESS STEEL  
VACUUM BOTTLE****Model SV-G****Instruction Manual****Name of Each Part**

- Please read these instructions before use, and keep for future reference.
- The illustrations used in this instruction manual may differ from the actual product you have purchased.

SV-G (E/K/T/C) / B

## Important Safeguards

Be sure to follow the instructions.

These WARNINGS and CAUTIONS are intended to prevent property damage or personal injury to you and others.

■ The degree of danger or damage by the misuse of the product is indicated as follows:



### WARNING

Indicates risk of serious injury or death.



### CAUTION

Indicates risk of injury or property damage if mishandled.

■ Prohibited or required actions are indicated as follows:



Indicates a prohibited operation.



Indicates a requirement or instruction that must be followed.



### WARNING



**Do not allow infants or small children to use this product. Keep out of the reach of infants and small children.**



### CAUTION

When using filled with a hot beverage:



• Do not open the Spout with the product tilted or close to your face, as this may cause the beverage to spurt out and scald you.



- Be careful, as it may cause scalding.
- Pour slowly without tilting the product suddenly.
- When pouring hot beverages into the Main Body, be careful not to let it tip over.
- Always use the Cup when drinking hot beverages. Never drink directly out of the bottle.



Do not attach parts other than those specifically designed for this product.

Do not disassemble the product (other than parts designed to be disassembled).

Do not shake the product.

Do not use the product if its thermal insulation performance has deteriorated.

Do not use if water enters the Vacuum Layer.

Drinking the water that seeps out from the Vacuum Layer may cause illness.

Vacuum Layer



Do not hold the product by the Cup or Stopper when carrying it, as the product may fall and cause injuries.

Do not use this product for other than storing and keeping beverages hot or cold.



Do not place near heat sources such as gas stoves, ovens, and heaters, as doing so may cause burns or product malfunction.

Do not heat in a microwave, as doing so may cause sparks.

Do not place near open flames (from gas stoves, etc.), on top of electric heaters, or IH cooking devices, as doing so may cause a fire or malfunction.

Avoid dropping or hitting against hard surfaces.

Do not drink out of the product while driving.

Never fill the product with the following:

- Dry ice or carbonated drinks
- Liquids high in sodium such as soup or Kobu-cha
- Dairy products or fruit juice
- Fruit pulp or tea leaves

Do not scratch or rub the design on the outside of the Main Body strongly using fingernails or hard objects, as this may cause the design to come off.

Do not remove the sticker on the bottom of the Main Body.

Sticker



Fill the Main Body only up to the level shown in the illustration.

**Drink Level**

Leave a bit of space below the rim (part A).

Inside of the Main Body



Thoroughly clean the inside of the Main Body, the Mouth, the Stopper, and the Cup after every use.

Be particularly careful after filling the product with sports drinks.

After adding hot beverages, the pressure inside the product may rise, making it difficult to remove the Stopper. If this happens, press the Button and then remove the Stopper.

Break large ice cubes into smaller pieces before adding them, as failure to do so may cause deformation of the Main Body and leakage.

Place the product vertically when carrying it in a bag to prevent leakage or condensation.

There may be condensation on the inside of the Cup when keeping warm hot beverages.

Always make sure that the parts are attached during use.

Make sure that there is no beverage leakage before using the product.

Consume beverages within the same day.

Leaving beverages for a long time may cause them to spoil. It may also cause the beverage to leak out or the Stopper or Cup to burst.

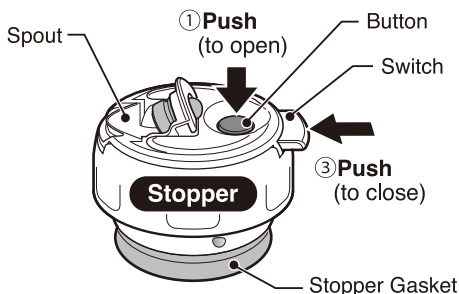
**Note:** The rattling noise that may be heard when the Main Body is shaken comes from the metallic foil used in the vacuum insulation to increase heat (cold) retention, and does not indicate a malfunction.

## How to Use:

- Follow the instructions for care and wash the product thoroughly before use.
- When you first use the product, there may be a plastic smell. However, this will become less noticeable with use.

### Pour the beverage.

- ① To pour beverages, keep the product upright and open the Spout by pushing the Button on the Stopper in the direction of the arrow ( ↓ ).
- ② Tilt the product and pour the beverage out from the Spout.
- ③ After pouring, return the product to an upright position and close the Spout by pushing the Switch in the direction of the arrow ( ← ).



- After filling the product with a hot beverage, close the Stopper while keeping the Spout open, and wait a while (about 20 seconds) before closing the Spout.
- After pouring, stand the product upright and wait 2-3 seconds before closing the Spout.
- Droplets of beverage may remain inside the Cup. Shake it and then wipe off any excess liquids.

## How to Take Care of Your Product:

- Clean the product after each use to prevent odors and mold, and to keep the product sanitary.
- Always remove each part before cleaning.

### When Cleaning Your Product:

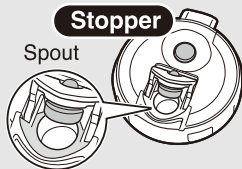
Please follow these instructions to prevent damage to the product:

- Do not boil or use a dishwasher or dish-dryer.
- Do not clean using paint thinner, polishing powders, abrasive cleansers, scrub brushes (nylon, metal wire, etc.), melamine sponges, the nylon side of an abrasive sponge, or any similar items.
- Do not use bleach as it may damage the product.  
Zojirushi's designated cleaning detergent SB-ZA01E may be used to clean the interior of the Main Body and the Stopper.
- Do not soak the Cup or Main Body in water for an extended period of time.
- Avoid damaging the inside of the Main Body when cleaning.
- If the product is not going to be used for an extended period, wash thoroughly and dry well. Store the product away from high temperatures and humidity.

### How to Clean

- ① Wash using warm water and mild dishwashing liquid with a sponge.
  - ② Rinse, leave to dry so there is no remaining water.
- Use a small brush or a soft sponge brush with a handle to wash parts that are difficult to wash.
  - Streaks or smudges caused by rubbing on the coated portion of the Main Body can be removed using a soft eraser.

- Wash the Spout of the Stopper (illustration to the right) as well.
- After washing, shake the Stopper several times with the Spout open to ensure that no water remains inside. Wipe off any moisture remaining on the surface.



### How to Clean Rust Spots and Water Stains

- ① Fill the interior of the Main Body with hot water with about 10% vinegar.
- ② Leave for 30 minutes to an hour without attaching the Stopper.
- ③ Wash the interior of the Main Body thoroughly.

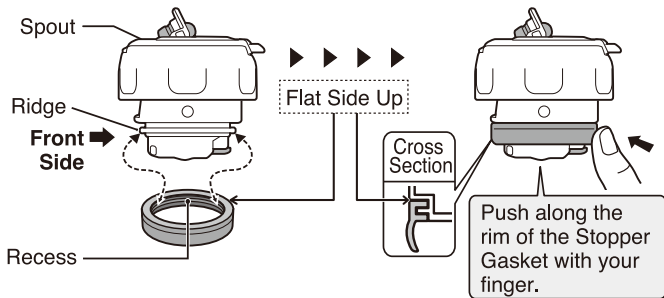
### Tea, Coffee, and Other Stubborn Stains (Main Body interior and Stopper)

Remove the Stopper from the Main Body and use Zojirushi's cleaning detergent SB-ZA01E (sold separately).

## How to Attach the Stopper Gasket:

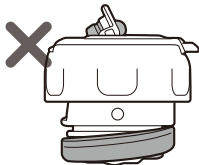
- ① Starting at the Front Side of the Stopper, attach the Stopper Gasket in the correct position by aligning the Ridge on the Stopper with the Recess in the Stopper Gasket.

- ② Attach by pushing in the edges.

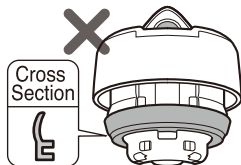


### Example of Incorrect Attachment

- If the Stopper Gasket is attached incorrectly, beverages may leak.



Attach in the correct position.



Make sure not to place the Stopper Gasket upside down.

### Replacing the Stopper:

We take care in only using materials that are safe and hygienic for food contact. However, if plastic parts become damaged or their surfaces become rough, please replace them for optimum performance. The Stopper may need to be replaced due to time and wear. Please check it about once a year. When replacing parts, please record the model number and part name beforehand. Then, contact either the store where you purchased the product or Zojirushi Customer Service. Replacement parts may be available for an additional charge.