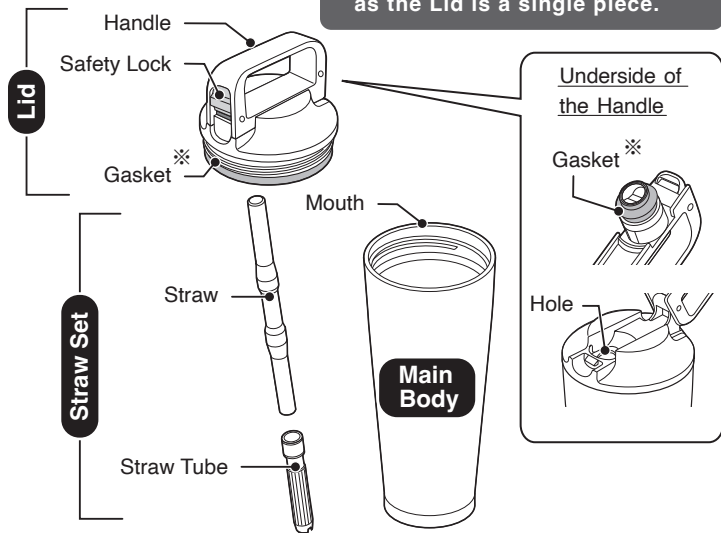


Name of Each Part

※The Gaskets are not removable, as the Lid is a single piece.



- Please read these instructions before use, and keep for future reference.
- The illustrations used in this instruction manual may differ from the actual product you have purchased.

■ You can find the instruction manual here as well.

<https://www.zojirushi.global/manual/sx-ma60h-77h/>



Important Safeguards Be sure to follow the instructions.

These WARNINGS and CAUTIONS are intended to prevent property damage or personal injury to you and others.

■ The degree of danger or damage by the misuse of the product is indicated as follows:



WARNING

Indicates risk of serious injury or death.



CAUTION

Indicates risk of injury or property damage if mishandled.

■ Prohibited or required actions are indicated as follows:



Indicates a prohibited operation.



Indicates a requirement or instruction that must be followed.

! WARNING

 Do not allow infants or small children to use this product. Keep out of the reach of infants and small children.

Never fill with hot beverages when using the Lid or Straw Set.

! CAUTION



Do not attach parts other than those specifically designed for this product.

Do not disassemble the product (other than parts designed to be disassembled).

Do not shake the product forcefully.

Do not shake the Lid when the Handle is open.

Your fingers may get caught, resulting in injury.

Do not use if water enters the Vacuum Layer.

Drinking the water that seeps out from the Vacuum Layer may cause illness.

Vacuum Layer



Do not drink beverages directly through the Hole on the Lid.

Do not fill with or discard beverages through the Hole on the Lid or through the Straw.

Do not place near heat sources such as gas stoves, ovens, and heaters, as doing so may cause burns or product malfunction.

Do not heat in a microwave, as doing so may cause sparks.

Do not place near open flames (from gas stoves, etc.), on top of electric heaters, or IH cooking devices, as doing so may cause a fire or malfunction.

Avoid dropping or hitting against hard surfaces.



Do not place cans or bottles inside the Main Body. Doing so may cause a malfunction.

Do not drink out of the product while driving.

Never fill the product with the following:

- Dry ice or carbonated drinks
- Liquids high in sodium such as soup or Kobo-cha
- Dairy products or fruit juice
- Fruit pulp or tea leaves

Do not pierce the product with ice picks or other sharp objects.

When holding the product by the Handle to carry it:

- Do not swing the product around by the Handle.
- Do not let the Lid turn in the open direction.
- Do not hang by the Handle using items such as clasps or strings.

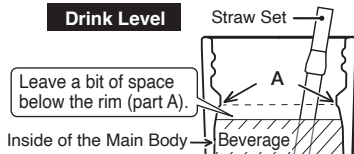
Do not scratch or rub the design on the outside of the Main Body strongly using fingernails or hard objects, as this may cause the design to come off.

Do not remove the sticker on the bottom of the Main Body.



Fill the Main Body only up to the level shown in the illustration with the Straw Set inserted.

Drink Level



Consume beverages within the same day.

Leaving beverages for a long time may cause them to spoil. This may also cause the beverage to come out, or the Lid to burst.

Thoroughly clean the inside and Mouth of the Main Body, the Lid, and the Straw Set after every use. Be particularly careful after filling the product with sports drinks.

Always make sure the Lid and Straw Set are securely attached during use.

Make sure that there is no beverage leakage before using the product.

Before using a vehicle drink holder, make sure that the product sits securely inside the drink holder.

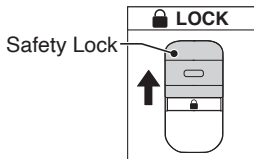
Break large ice cubes into smaller pieces before adding them, as failure to do so may cause deformation of the Main Body and leakage.

Place the product vertically when carrying it in a bag to prevent leakage or condensation.

Note: The rattling noise that may be heard when the Main Body is shaken comes from the metallic foil used in the vacuum insulation to increase cold retention, and does not indicate a malfunction.

How to Use:

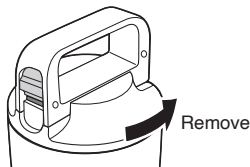
- Follow the instructions for care and wash the product thoroughly before use.
- When you first use the product, there may be a plastic smell. However, this will become less noticeable with use.
- The stainless steel body of the Tumbler may give off a metallic odor, however this is a normal property of stainless steel.
- To avoid damage to the product or leakage, always keep the Handle closed and the Safety Lock locked when you are not drinking beverages.
- Be sure to keep the product upright when attaching the Lid or opening or closing the Handle.



Fill the Main Body with beverage.

1 Remove the Lid from the Main Body.

Turn the Lid in the direction of the arrow and remove it from the Main Body.



2 Insert the Straw Set and fill the Main Body with beverage.

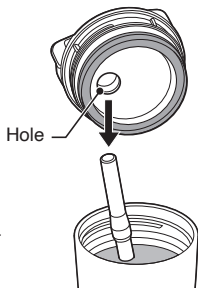


- When adding ice, ensure that the amount of ice is half that of the beverage or less so that the Straw will come out smoothly.

3 Set the Lid.

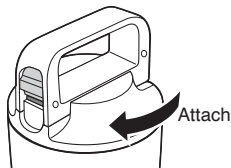
Fit the Straw against the Lid Hole and set the Lid.

- The Lid may be difficult to set if the Main Body is empty.



4 Close the Lid.

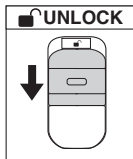
Attach the Lid to the Main Body by turning it clockwise as illustrated.



Drink the beverage.

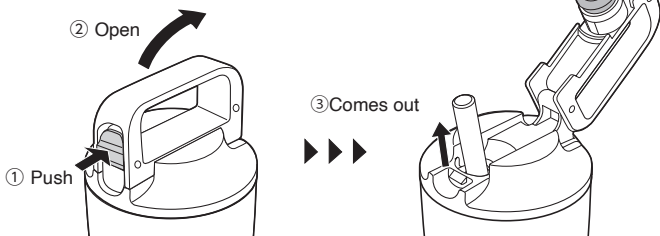
1 Unlock the Safety Lock.

Slide the Safety Lock downward to unlock.



2 Open the Handle and drink the beverage.

- ① Press the Safety Lock.
- ② While holding it down, open the Handle.
- ③ The Straw will come out.

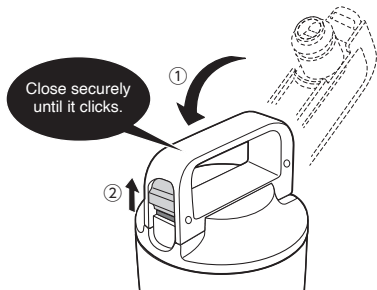


3 Close the Handle and lock.

- ① Close the Handle until it clicks.
- ② Slide the Safety Lock upward to lock it securely.

- The Straw fits inside the product when the Handle is closed.

- It may be hard to open and close the Handle if the Main Body is empty.



How to Take Care of Your Product:

- Clean the product after each use to prevent odors and mold, and to keep the product sanitary.
- Always disassemble the product before cleaning.

When Cleaning Your Product:

Please follow these instructions to prevent damage to the product:

- Do not boil.
- Do not use a dishwasher or dish-dryer on the Lid or Straw Set.
- Do not clean using paint thinner, polishing powders, abrasive cleansers, scrub brushes (nylon, metal wire, etc.), melamine sponges, the nylon side of an abrasive sponge, or any similar items.
- Do not use bleach as it may damage the product. Zojirushi's designated cleaning detergent SB-ZA01E may be used to clean the interior of the Main Body, the Lid, and the Straw Set.
- The Main Body is fully washable, but do not soak it in water for an extended period of time.
- Avoid damaging the inside of the Main Body when cleaning.
- If the product is not going to be used for an extended period, wash thoroughly and dry well. Store the product away from high temperatures and humidity.

How to Clean

Hand wash is recommended for extended use.

- ① Wash using warm water and mild dishwashing liquid with a sponge.
Use a small brush or a soft sponge brush with a handle to wash parts that are difficult to wash.
 - ② Rinse, leave to dry so there is no remaining water.
Thoroughly flush the inside of the Straw Set with strong running water.
- If streaks, smudges or color transfer caused by rubbing on the coated portion of the Main Body cannot be removed by the above method, try using a soft eraser. If it still cannot be removed, rub using warm water and mild dishwashing liquid with a sponge.

How to Take Care of Your Product: continued

When using a dishwasher or dish-dryer on the Main Body:

- Please review the instruction manuals for the dishwasher and detergent before using.
- Do not use a commercial dishwasher or dish dryer.
- Do not touch the product immediately after washing and drying as it may be hot.
- Do not press the Main Body firmly against the rack.
Doing so may cause damage or deformation of the Main Body, or the coating, printing, and/or stickers to peel off.
- Parts of the exterior of the Main Body may become lightened from cleansers or water stains. If this occurs, pour hot water over the discolored portion, and then immediately wipe it with a dry, soft cloth.
Be careful not to scald yourself.

How to Clean Rust Spots and Water Stains	<ol style="list-style-type: none">① Fill the Main Body with hot water with 10% vinegar.② Leave for 30 minutes to an hour without attaching the Lid or Straw Set.③ Wash the interior thoroughly.
Tea, Coffee, and Other Stubborn Stains (Main Body interior, Lid, and Straw Set)	Remove the Lid and Straw Set from the Main Body and use Zojirushi's cleaning detergent SB-ZA01E (sold separately). (Contact Zojirushi Customer Service or your local dealer for further information.)

Replacing the Lid and Straw Set:

We take care in only using materials that are safe and hygienic for food contact. However, if plastic parts become damaged or their surfaces become rough, please replace them for optimum performance. The Lid and Straw Set may need to be replaced due to time and wear. Please check them about once a year. When replacing parts, please record the model number and part name beforehand. Then, contact either the store where you purchased the product or Zojirushi Customer Service. Replacement parts may be available for an additional charge.