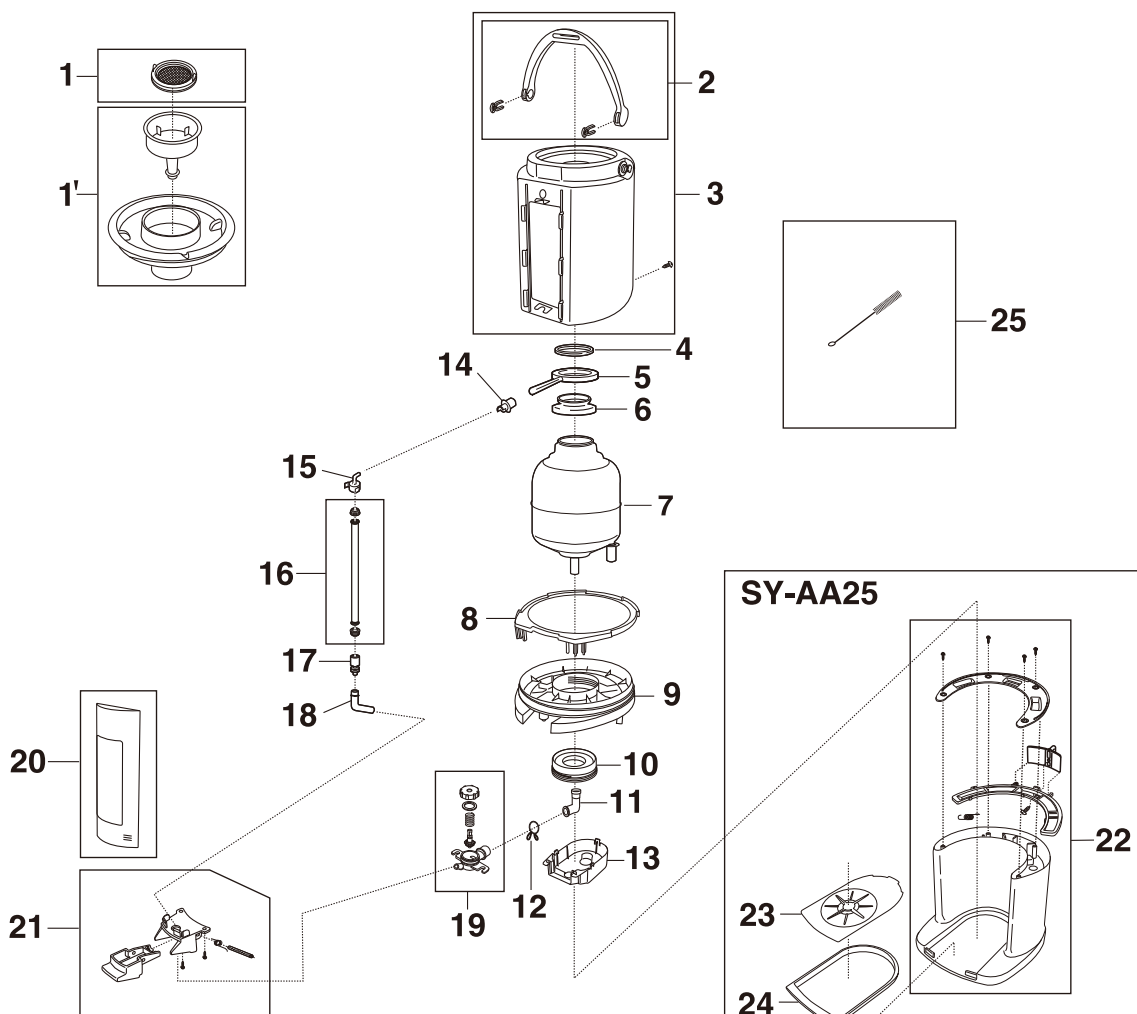




Service Manual

Thermal Beverage Dispenser



Model No.SY-AA25N comes without a Serving Stand.

SY-AA25 / SY-AA25N (without Serving Stand)

ZOJIRUSHI AMERICA CORPORATION

Tel : 800-733-6270

www.zojirushi.com

4.2.2 Attaching the Valve Assembly

Fit the slim part of the Valve Shaft into the slot of the Lever Set and attach the Valve Assembly to the Bottom Connection Tube. **Fig.17**

Attach the Joint Seal Rubber to the liner outlet. Make sure it is tightly fitted.

Fit the Joint Seal Rubber Clip to the Joint Seal Rubber and then attach the Valve Assembly. Slide the Joint Seal Rubber Clip on to the Valve Case outlet and make sure that the Joint Seal Rubber is tightly clipped on to the Valve Case outlet.

Then attach to the Valve Assembly. **Fig.18**

*Make sure that the Joint Seal Rubber is set horizontal.

First fit in the Tab at the back of the Valve Cover then snap fit in the Tabs at the Front of the Valve Cover. **Fig.19**

4.2.3 Attaching the Panel and Sight Gauge Tube

a) Attach the Sight Gauge Tube Cover A to the Sight Gauge Tube. **Fig.20**

b) Holding the Sight Gauge Tube Cover A of the Sight Gauge Tube, insert the bottom portion of the Sight Gauge Tube back in its place. **Fig.21**

c) Then insert the top Sight Gauge Tube Cover A into the Shoulder Connection Tube. **Fig.22**

d) Slide the Panel downward until it is securely in its place. **Fig.23**

4.2.4 Replacing the Main Body back into the Serving Stand (This applies to Model No.SY-AA25 only.)

Align the three tabs of the Body Set with the three slots of the Serving Stand and insert until the lever returns to the original position to lock. **Fig.24**

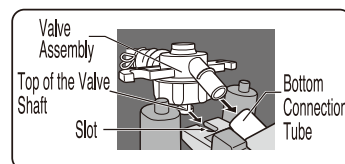


Fig.17

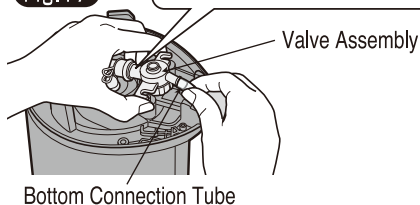


Fig.18

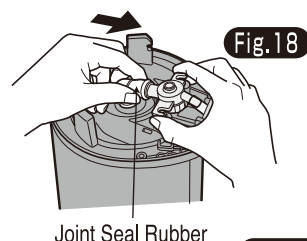


Fig.19

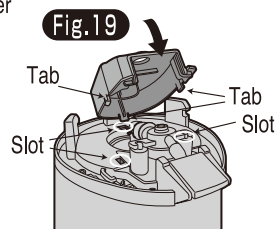


Fig.20

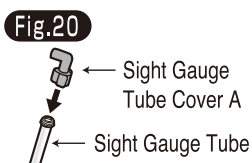


Fig.21



Fig.22

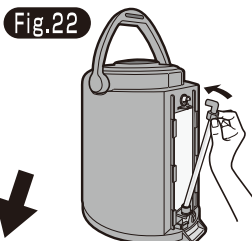


Fig.23

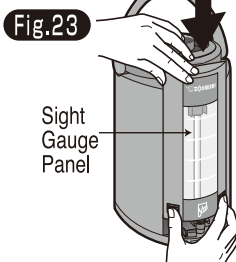


Fig.24

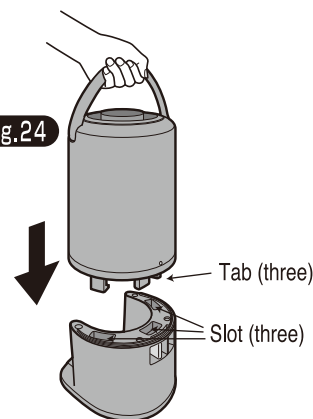


Fig.25

ITEM	PART NAME	PART CODE NUMBER
1	Stopper Mesh	VY10-J
1'	Stopper Set	7-AYA-PO11
2	Handle	7-AYA-PO20
3	Body Set	N/A
4	Mouth Ring Packing	7-VYB-PO20
5	Mouth Ring	7-VYB-PO30
6	Mouth Rubber	7-SYA-PO60
7	Stainless Liner	N/A
8	Body Holder	7-AYA-PO90
9	Bottom	7-AYA-P100
10	Bottle Holder	7-VYB-P141
11	Joint Seal Rubber	7-SYA-P110
12	Joint Seal Rubber Clip	7-AYA-P130

ITEM	PART NAME	PART CODE NUMBER
13	Valve Cover	7-AYA-P140
14	Shoulder Conn. Tube	7-AYA-P150
15	Sight Gauge Tube Cover A	7-VYD-P140
16	Sight Gauge Tube	7-VYD-P150
17	Sight Gauge Tube Cover B	7-VYD-P160
18	Bottom Conn. Tube	7-AYA-P190
19	Valve Assembly	7-AYA-P200
20	Sight Gauge Panel	7-AYA-P210
21	Lever Set	7-AYA-P220
22	Serving Stand(Leg)	7-AYA-P230
23	Strainer	7-AYA-P240
24	Collecting Tray	7-AYA-P250
25	Brush(S)	7-VYD-P250

CLEANING INSTRUCTIONS

- **DO NOT COMPLETELY IMMERSE ENTIRE SERVER.**
- **DO NOT USE BLEACH, CHLORINE, OR OTHER HARSH CHEMICALS.**
(This may cause damage to the metal and / or thermal breakdown.)
- **THE THERMAL *GRAVITY POT*® BEVERAGE DISPENSER IS TO BE USED WITH ONLY WATER OR COFFEE, IT IS NOT RECOMMENDED FOR USE WITH ANY OTHER SUBSTANCE.**

Whenever the Thermal *Gravity Pot*® Beverage Dispenser has been disassembled for cleaning, for safety reason, fill the Thermal *Gravity Pot*® Beverage Dispenser with water and pump the dispensing lever several times to check and test that water dispenses smoothly and that there is no leakage.

1. CLEANING OF LINER

1.1 Daily cleaning

Fill the Thermal *Gravity Pot*® Beverage Dispenser with clean hot water and pump the dispensing lever to empty the Thermal *Gravity Pot*® Beverage Dispenser. This will remove any clots or coffee grind build up.

1.2 Using a coffee dispenser cleaner, brew a full pot of cleaner into the Thermal *Gravity Pot*® Beverage Dispenser, allow cleaner to sit in server for 10-15 minutes.

1.3 After the recommended time has elapsed use a large brush to clean the interior of the Thermal *Gravity Pot*® Beverage Dispenser thoroughly.

1.4 Empty contents of the Thermal *Gravity Pot*® Beverage Dispenser through the dispensing valve using a pumping action on the lever.

1.5 Refill the Thermal *Gravity Pot*® Beverage Dispenser with clean water and dispense it out the valve again until the water runs clear. If water is not clear, repeat rinse process until it is.

2. CLEANING OF PARTS

The Thermal *Gravity Pot*® Beverage Dispenser can be disassembled easily for cleaning and sanitizing of parts adjacent to the liner.

Use the three sink cleaning and sanitizing method to clean and sanitize the remaining parts. The first sink filled with warm water and detergent solution, the second sink filled with warm clean water, and the third sink filled with cool water and sanitizer solution.

- 1) Wash all parts in the water/detergent filled sink using the supplied small brush.
- 2) Rinse all parts in the clean water filled sink.
- 3) Sanitize all parts by putting them into the sink filled with the sanitizer solution for 5 min.
- 4) Dispense sanitizer solution completely out of the valve assembly and make sure no sanitizer solution remains.
- 5) Allow the Thermal *Gravity Pot*® Beverage Dispenser to air-dry completely.

2.1 HOW TO DETACH THE MAIN BODY (This applies to Model No.SY-AA25 only.)

Hold the handle at an upright position and then lift up the Main Body by squeezing the lever located at the back side of the Serving Stand.

Fig. 1

2.2 HOW TO DETACH THE SIGHT GAUGE PANEL AND SIGHT GAUGE TUBE

2.2.1 Hold the top of the Sight Gauge Panel with your left hand and push up the ribs located at the bottom with your right hand. Fig. 2

2.2.2 Gently pull out and then lift up the Sight Gauge Tube to remove.

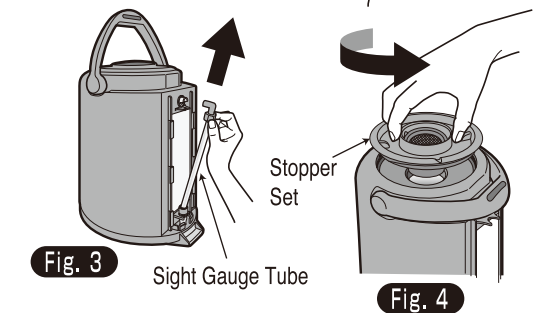
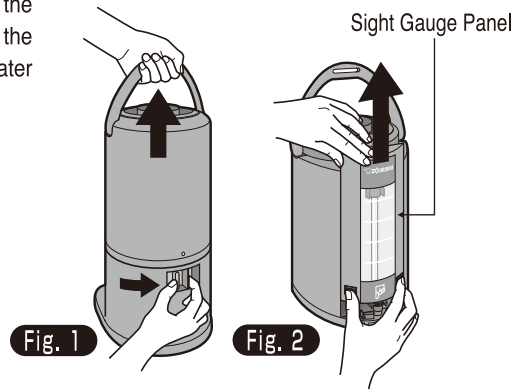
Fig. 3

2.3 HOW TO DETACH THE VALVE ASSEMBLY

2.3.1 First, remove the Stopper Set Fig. 4

Then, turn the Thermal *Gravity Pot*® Beverage Dispenser upside down and place it on a solid flat surface.

With your fingers, remove the Valve Cover by simultaneously pressing the arrows engraved on the Valve Cover exposing the Valve Assembly. Fig. 5



2.3.2 Push the Valve Assembly backwards by firmly holding the Bottom Connection Tube with your fingers. **Fig. 6**

Slide the Joint Seal Rubber Clip backwards. Pull the Valve Assembly forward by firmly holding the Joint Seal Rubber. **Fig. 7**

Pull out the Joint Seal Rubber from liner. **Fig. 8**

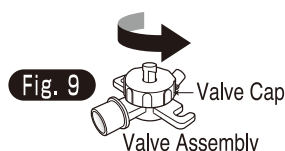
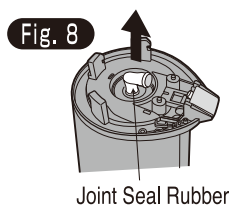
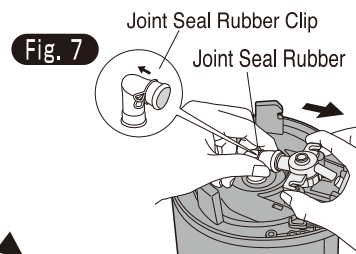
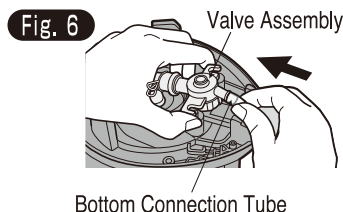
2.3.3 Remove the Valve Assembly Valve Cap by turning it counterclockwise. **Fig. 9**

The Valve Assembly can be disassembled into four parts, the Valve Cap, Valve Spring, Valve Shaft and Valve Case. **Fig.10**

2.4 HOW TO DETACH THE BOTTOM CONNECTION TUBE

Pull out the Sight Gauge Tube Cover B along with the Connection Tube.

The Sight Gauge Tube Cover B and the Connection Tube can be disassembled. **Fig.11** **Fig.12**



3. CLEANING THE SHOULDER AND BOTTOM CONNECTION TUBES

3.1 Using the small supplied brush, dip it into the water/detergent solution as needed and run through the Shoulder Connection Tube and the Mouth Ring, making sure the brush has gone all of the way through the tube. Repeat as needed until the tube is clean.

3.2 Using the small supplied brush, dip it into the water/detergent solution as needed and run through the Bottom Connection Tube, making sure the brush has gone all of the way through the tube. Repeat as needed until the tube is clean.

3.3 Rinse the Shoulder Connection Tube, the Mouth Ring and the Bottom Connection Tube thoroughly. **Fig.13**

4. REASSEMBLING THE UNIT AFTER CLEANING

4.1 Attaching the Sight Gauge Tube Cover B and Bottom Connection Tube:

a) Attach the Sight Gauge Tube Cover B to the Bottom Connection Tube. **Fig.14**

b) Insert the Bottom Connection Tube assembly into the bottom hole of the panel. **Fig.15**

4.2.1 Reassembling the Valve Assembly

Make sure that the Stopper Gasket and the O-ring are firmly fitted to the Valve Shaft and then insert it into the Valve Case. Place the Valve Spring and after checking that the Cap Gasket is in place, turning clockwise screw the Valve Cap on tightly. **Fig.16**

